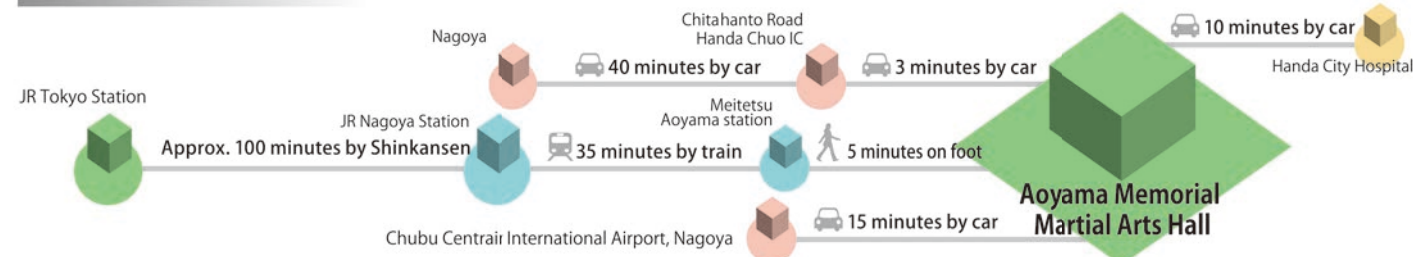


Aoyama Memorial Martial Arts Hall



Address	2-1-2, Aoyama, Handa City, Aichi Prefecture
Size and specifications	This training facility meets the requirement of the national federations of judo and karate. Air-conditioned Total floor space: 759.6㎡ (42.2m×18m), Ceiling height: 5.84 m Available space for 3 judo fields, 3 karate fields.
Completed	1995
Parking spaces	146 spaces
Universal design	Sloped doorways, Wheelchair-accessible restrooms, Disabled parking spaces
Affiliated facilities	9 showers (6 showers for men, 3 showers for women), Locker room (1 room each for men and women), Multi-functioned restroom, 3 conference rooms, Free Wi-Fi
Website	http://www.city.handa.lg.jp

ACCESS



10 business hotels are available within 20 minutes by car.

Medical institutions in the vicinity

Handa City Hospital

Address	2-29, Toyo-cho, Handa City, Aichi Prefecture
Holidays and nighttime	Emergency care available 24 hours a day
Foreign language support	English, Portuguese
Distance from the training facilities	3.5 km, 10 minutes by car

Departments	Internal Medicine, Gastroenterology, Thoracic Internal Medicine, Nephrology, Diabetes and Endocrinology, Cardiology, Surgery, Psychosomatic Internal Medicine, Thoracic Surgery, Psychiatry, Pediatrics and 24-hour consultation for infants, Cardiovascular Surgery, Orthopedics, Rheumatology, Cranial Nerve Surgery, Dermatology, Urology, Obstetrics and Gynecology, Ophthalmology, Otolaryngology, Radiology, Anesthesiology, Dentistry, Oral Surgery, Pathology and Diagnosis
-------------	---

Sightseeing spots in the vicinity



Brewery Storehouses "Kura-no-Machi"

Lanes run alongside the blackboard brewery storehouses. These warehouses, standing by the Handa Canal, were made to store vinegar. They remain as images of the old Edo-period. The lanes are perfect for strolling. You may feel the change of seasons with the sea breeze.

10 minutes by car from Aoyama Memorial Martial Arts Hall



Nankichi's Hometown "Nankichi-no-sato"

Nankichi Niimi, a famous writer of children's stories, was born in Handa City. Yanabe Ward is known as Nankichi's hometown "Nankichi no sato", and welcomes you with original scenes from Nankichi's stories and flowers, about which Nankichi cared so much.

15 minutes by car from Aoyama Memorial Martial Arts Hall



Red-brick Building in Handa

The red-brick building, built in 1898 as a brewery, is one of the largest red-brick buildings ever to exist in Japan.

10 minutes by car from Aoyama Memorial Martial Arts Hall

Sports Division, Handa City

TEL +81-569-22-1184

Office hours: Mon. through Fri. 8:30 a.m. – 5:15 p.m.
* Except national holidays and Dec. 29 through Jan. 3
* Only Japanese available.

E-Mail sports@city.handa.lg.jp *English available

Information on the sports facilities in Aichi

Aichi Sports Commission <http://aichi-sc.jp/>

*The information listed on this leaflet is as of October, 2018, and is subject to change without notice.

As a true martial arts center, the external appearance of this building shows the traditional atmosphere of Japan

Aoyama Memorial Martial Arts Hall



Handa City, Aichi Prefecture

Pre-game training camp/Suggested Sports

Judo, Taekwondo, Karate



Main Hall Area 759.6 m²

This training facility meets the requirement of the national federations of judo and karate. Floor area: 759.6 m² (42.2 m x 18 m), Ceiling height: 5.84 m, Available space for 3 judo fields, 3 taekwondo fields, 3 karate fields or 3 kendo fields. Air-conditioned. Spectator seating: 330 seats



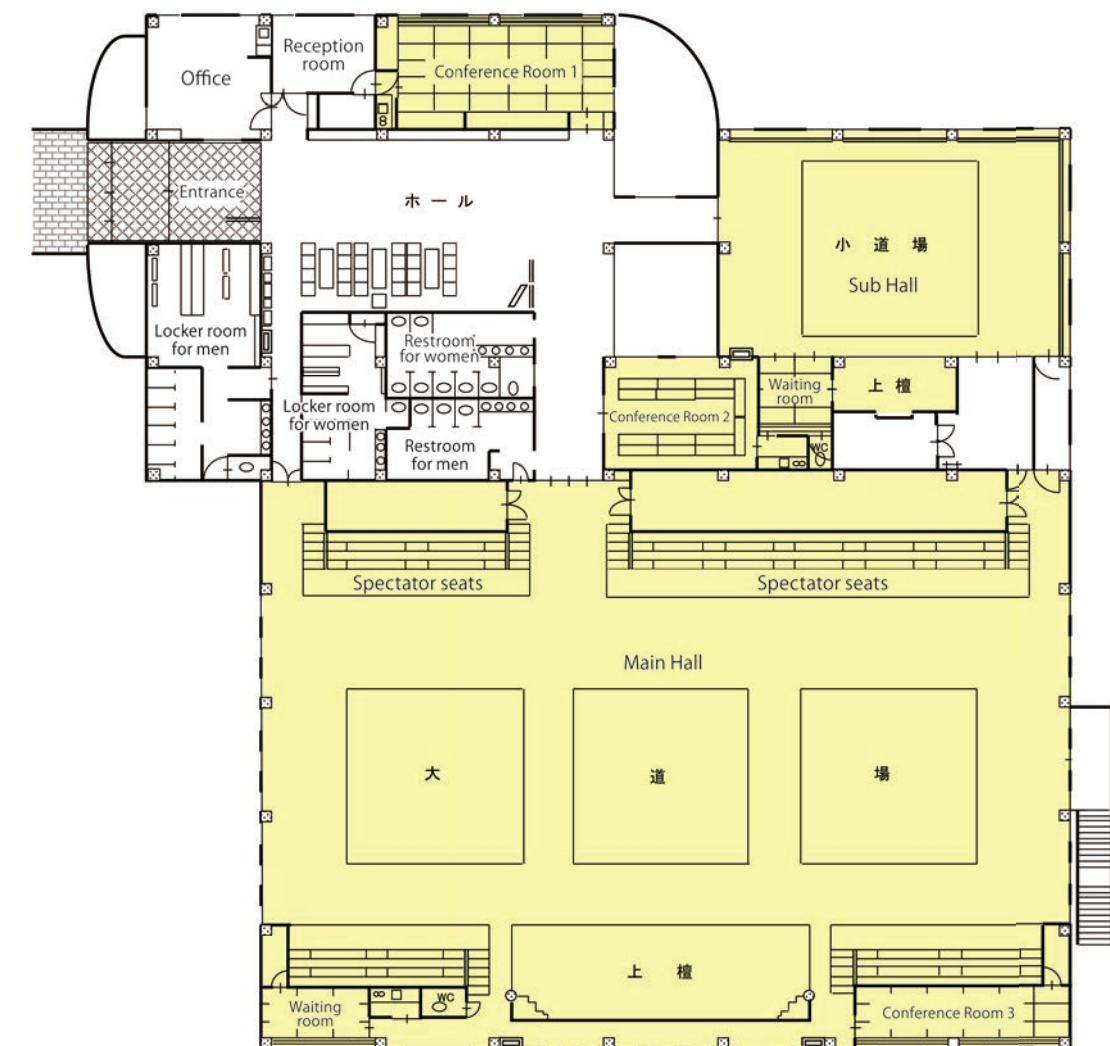
Sub Hall Area 216 m²

Floor area: 216 m² (18 m x 12 m), Available space for 1 judo field, 1 taekwondo field, 1 karate field or 1 kendo field.



Aoyama Memorial Martial Arts Hall

Aoyama Memorial Martial Arts Hall is easy to access, as it is located within 5 minutes on foot from the nearest railway station and 15 minutes by car from Chubu Centrair International Airport, Nagoya. The hall has a main hall and a sub hall along with 3 conference rooms.



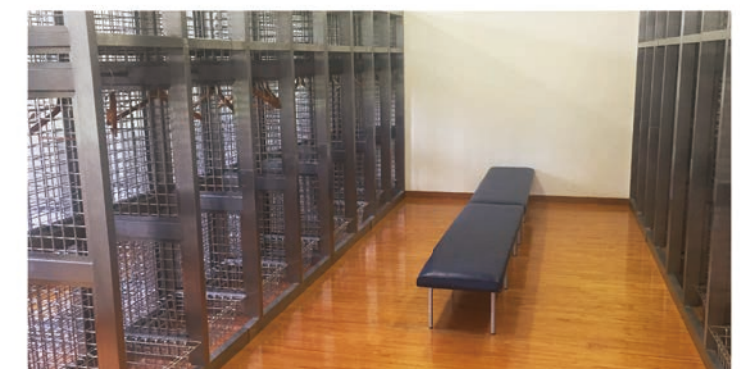
Conference Room 1
Japanese-style room, 72 m², equipped with a hot water heater



Conference Room 2
Western room, 45 m², equipped with a hot water heater and 42 chairs



Conference Room 3
Japanese-style room, 36 m², equipped with a hot water heater



Locker room (1 room each for men and women)
23 lockers and 6 showers in a locker room for men.
8 lockers and 3 showers in a locker room for women