

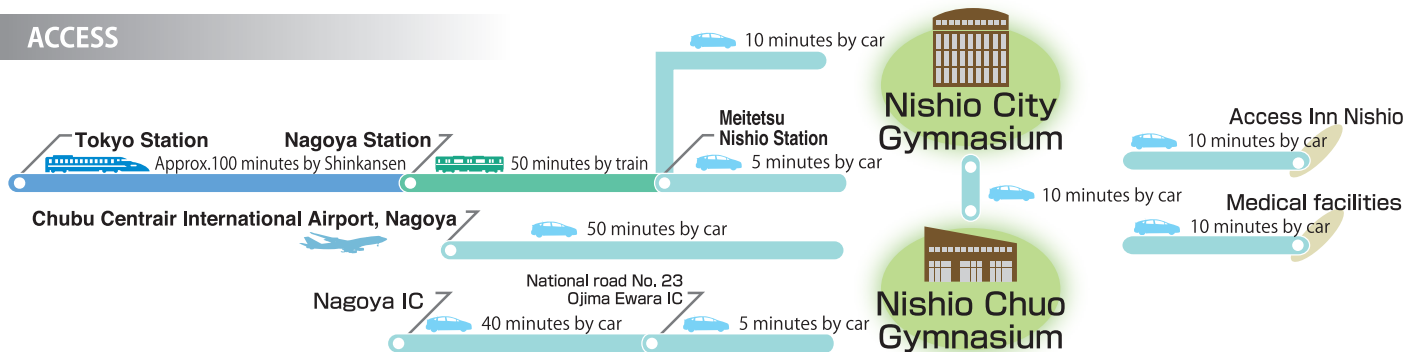
Nishio City Gymnasium

Address	1-1, Daigo, Ojima-cho, Nishio City, Aichi Prefecture	Completed	1993
Size and specifications	<ul style="list-style-type: none"> ■ Central air conditioning ■ Main Arena (2,280㎡) : 3 basketball courts, 3 volleyball courts, 3 tennis courts, 12 badminton courts, 1 handball court ■ Sub Arena (714㎡) : 1 basketball court, 1 volleyball court, 1 tennis court, 4 badminton courts ■ Dojo (535㎡) : 2 judo halls, 2 kendo halls, 2 naginata halls ■ Table-tennis hall (274㎡) : 8 ping-pong tables ■ Training room (197㎡) : 16 types of training machines totaling in 27 units, dumbbells ~22.5kg, 3 flat benches 		
Parking spaces	689 cars	Universal design	<ul style="list-style-type: none"> ■ Sloped doorways ■ Elevators ■ Wheelchair-accessible restroom
Affiliated facilities	<ul style="list-style-type: none"> ■ Meeting rooms (3) ■ Men and Women's fitting rooms, washroom, showers ■ Wheelchair-accessible lavatory ■ Vending machines 		
Website	https://www.city.nishio.aichi.jp/index.cfm/9,3138,95,528,html		




Nishio Chuo Gymnasium

Address	120, Mae-dori, Choda-cho, Nishio City, Aichi Prefecture	Completed	2009
Size and specifications	<ul style="list-style-type: none"> ■ Central air conditioning ■ Arena (1,672㎡) : 3 basketball courts, 3 volleyball courts, 3 futsal courts, 9 badminton courts, 9 indiana courts ■ Dojo (659㎡) : 2 judo halls, 2 kendo halls ■ Table tennis hall (326㎡) : 10 ping-pong tables ■ Training room (126㎡) : 12 types of training machines totaling in 21 units, dumbbells ~10kg, 1 flat bench 		
Parking spaces	155 cars	Universal design	<ul style="list-style-type: none"> ■ Sloped doorways ■ Elevators ■ Wheelchair-accessible restroom
Affiliated facilities	<ul style="list-style-type: none"> ■ Meeting rooms (2) ■ Men and Women's fitting rooms, washroom, showers ■ Multi-purpose lavatory ■ Vending machines 		
Website	https://www.city.nishio.aichi.jp/index.cfm/9,3139,95,528,html		

ACCESS



Accommodations in the vicinity

Access Inn Nishio  Address 4-64, Hananoki-cho, Nishio City, Aichi Prefecture URL https://www.access-inn.jp/nishio/ Tel +81-563-55-0240 Fax +81-563-57-5330	Green Hotel Sangane  Address 1-287, Nyukaizan, Higashihazu-cho, Nishio City, Aichi Prefecture URL https://www.gh-sangane.co.jp/ Tel +81-563-62-4111 Fax +81-563-62-4672	Kira Onsen (hot spring)  Address Kira-cho, Nishio City, Aichi Prefecture URL http://nishiokanko.com/en With beautiful views of Mikawa Bay, Kira Onsen has an abundance of wonderful accommodation that provide the hot spring experience, ranging from the spacious Mikawan Resort Linx to a variety of charming traditional Japanese Inns and Bed and Breakfasts. For inquiries about accommodation in Kira Onsen. Please contact: Nishio Sightseeing Association at +81-563-57-7882
--	--	--

Medical institutions in the vicinity

Nishio Municipal Hospital Address 6, Kamiawahara, Kumami-cho, Nishio City, Aichi Prefecture Holidays and nighttime 24-hour emergency assistance Foreign language support Portuguese (not available on weekends and during nighttime) Distance from training facility 10 minutes by car	Departments Internal Medicine (General, Cardiology, Gastroenterology, Pulmonology, Neurology, Endocrinology, Hematology), Pediatrics, General Surgery, Orthopedic Surgery, Plastic Surgery, Neurological Surgery, Thoracic Surgery, Dermatology, Urology, Obstetrics, Gynecology, Ophthalmology, Otorhinolaryngology, Radiology, Physical Medicine and Rehabilitation, Anesthesiology, Psychiatry, Pathologic diagnosis URL http://nishio-shimin-byouin.jp/
---	--

Municipal board of education of Nishio, Sports Division, Customer service

TEL | +81-563-54-0002

Office hours: Mon. through Fri. 8:30a.m.-5:15p.m.
*Except national holidays and Dec. 29 through Jan. 3 *Only Japanese available.

E-Mail | sports@city.nishio.lg.jp *English acceptable

Information on the sports facilities in Aichi

Aichi Sports Commission

<http://aichi-sc.jp/>

※The information listed on this leaflet is as of July, 2019, and is subject to change without notice.

Multipurpose sports facilities available for use (arena, dojo, table tennis room etc.)

Nishio City Gymnasium Nishio Chuo Gymnasium



Nishio City, Aichi Prefecture

Nishio is situated in southern Aichi along the eastern bank of the Yahagi river, which stretches through the vertical length of the prefecture. With Mikawa Bay to the south, Yahagi river to the west and Mt. Sangane to the north, Nishio is a city blessed with a rich and diverse natural landscape. (The views from Mt. Sangane are particularly stunning in June, before the weather becomes too hot, and the beautiful hydrangeas are in full bloom.) With so many natural resources close at hand, Nishio is bustling hub for manufacturing, agriculture and commerce. Nishio is famous for being one of Japan's leading matcha producers, boasting some of the highest quality tea in the country. In addition, the abundant waterways also provide delicious farmed eels and Asari clams, and help provide fertile soil for growing Nishio's renowned carnations, which are exported nationwide.

Pre-game training camp/Suggested Sports

Basketball, Volleyball, Badminton, Judo, Table tennis, etc

Nishio City Gymnasium

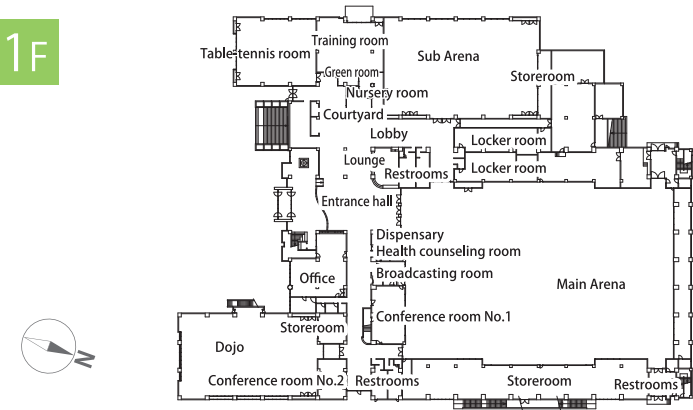
Nishio City Gymnasium is the primary sports and recreational facility in Nishio City, whose Main Arena, Sub Arena, Dojo, table-tennis room, and training room provide a space for a wide range of physical activities. For meetings, 3 conference rooms of varying size are also available. The gymnasium is a barrier-free environment, fully equipped with elevators to enable accessibility for the physically challenged.



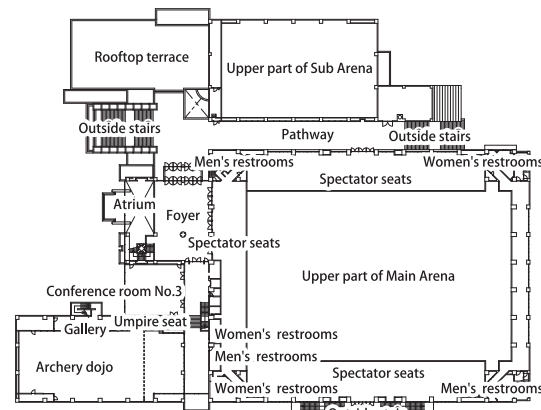
Main Arena

- Area: 2,280 m² (38m×60m) • Air-conditioner, audio equipment
- 3 basketball courts, 3 volleyball courts, 3 tennis courts, 12 badminton courts, 1 handball court
- Spectator seats (2F): 1,508 seats (additional 6 seats for disabled), movable spectator seats (1F): 660 seats (manual)

1F



2F



Dojo

- Area: 535 m² (17.5m×30.6m)
- 2 judo halls, 2 kendo halls, 2 naginata halls
- Air-conditioner, audio equipment



Sub arena

- Area: 714m² (21m×34m) • Air-conditioner, audio equipment
- 1 basketball court, 1 volleyball court, 1 tennis court, 4 badminton courts



Fitting room

Men and Women's coin lockers, washrooms, and coin showers



Training room

- Area: 197m² • Air-conditioner
- 16 types of professional grade training machines totaling in 27 units, dumbbells ~22.5kg, 3 flat benches



Meeting rooms

- Meeting room No.1 - 22 chairs, round table
- Meeting room No.2 - 30 chairs, 11 long tables
- Meeting room No.3 - 84 chairs, 28 long tables

Nishio Chuo Gymnasium

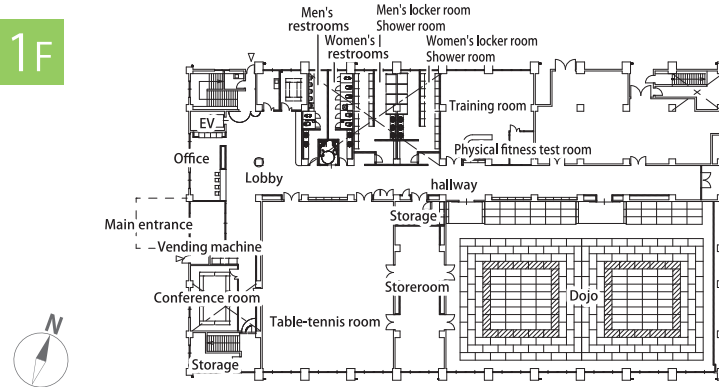
Nishio Chuo gymnasium is a recently constructed sports facility located in the city center, featuring arenas, dojo, table-tennis, and a training room. Additionally, 2 meeting rooms are also available for use. The gymnasium is a barrier-free environment, fully equipped with elevators to enable accessibility for the physically challenged.



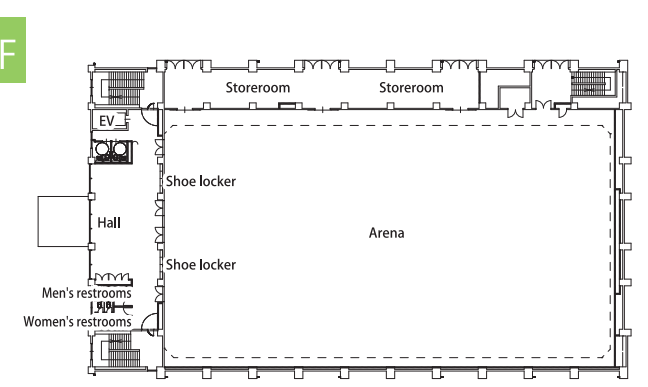
Arena

- Area: 1,672 m² (30m×53m) • Air-conditioner, audio equipment
- 3 basketball courts, 3 volleyball courts, 3 futsal courts, 9 badminton courts, 9 Indica courts
- Spectator seats: 318 seats

1F



2F



Dojo

- Area: 659 m² (20m×32m)
- 2 judo halls, 2 kendo halls
- Air-conditioner, audio equipment



Table-tennis room

- Area: 326m²(20m×15m)
- 10 ping-pong tables
- Air-conditioner, audio equipment



Training room

- Area: 126m²
- Air-conditioner
- 12 types of professional grade training machines totaling in 21 units, dumbbells ~10kg, 1 flat bench



Fitting room

Men and Women's coin lockers, washrooms, and coin showers



Meeting rooms

Meeting room - 20 chairs, 10 long tables
Lecture room - 8 chairs, 4 long tables

International or national competitions held

■ The National Sports Festival (1994 Kendo)

■ Shorinji Kenpo Competition of Interscholastic Athletic Meet 2018